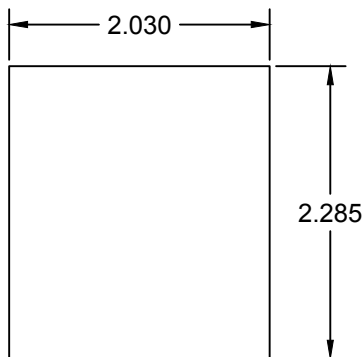
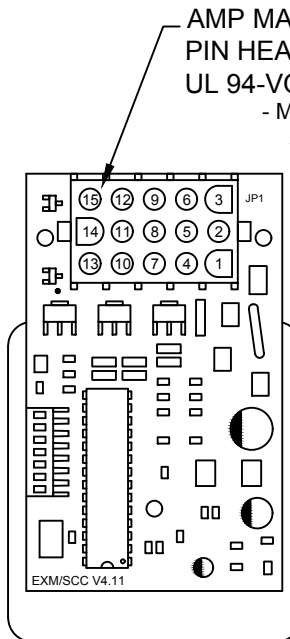
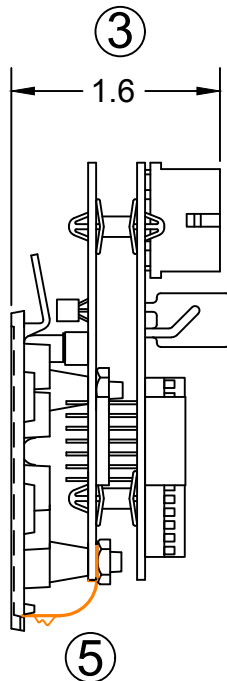


RECOMMENDED PANEL HOLE:



PANEL THICKNESS REQUIREMENTS:  
0.0625" MINIMUM  
0.100" MAXIMUM



AMP MATE-N-LOK  
PIN HEADER #350714-1  
UL 94-VO

- MATING PLUG:  
AMP/TYCO 350736-1  
MATE-N-LOK II 770023-1

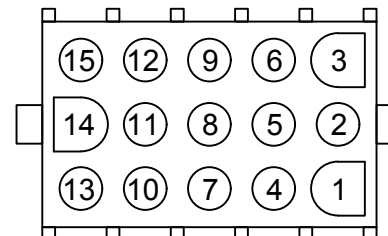
- SOCKET PINS REQUIRED:  
AMP/TYCO 350550-1  
MATE-N-LOK II 770249-3

REFER TO THESE DRAWINGS:

8047-B = OPERATING INSTRUCTIONS  
and POWER REQUIREMENTS  
6963-I = WIRING DIAGRAM

**HEADER #JP-1 PINOUT:**

FOR SCHEMATIC, REFER TO DORAN DRAWING NO. 6963-F



PIN	FUNCTION	SIGNAL TYPE
JP1-1	- BATTERY (GROUND)	GROUND FEED TO MODULE
JP1-2	+ BATTERY (POWER)	+12VDC BATT TO MODULE
JP1-3	60 SEC ALARM TIMER	(5 AMP CIRCUIT PROTECTION) JUMPER TO PIN 14 (OPTION A)
JP1-4	10 MIN ARMING TIMER	JUMPER TO PIN 14 (OPTION B)
JP1-5	60 SEC ALARM AND 10 MIN ARMING TIMERS	JUMPER TO PIN 14 (OPTION C)
JP1-6	(ACC.) ARMING MAINTAIN	+12VDC ACC TO MODULE (OPTIONAL FUNCTION)
JP1-7	NOT USED	
JP1-8	NOT USED	
JP1-9	DOOR SWITCH SIGNAL	GROUND INPUT
JP1-10	SCC RESET SWITCH SIGNAL	GROUND INPUT
JP1-11	MODULE ARMING SIGNAL	+12VDC INPUT
JP1-12	IGNITION POWER	+12VDC IGNITION TO MODULE (5 AMP CIRCUIT PROTECTION)
JP1-13	DOME LIGHT CONTROL	GROUND OUTPUT (1.5 AMPS MAX)
JP1-14	TIMER FUNCTION CONTROL	JUMPER TO PINS 3, 4, OR 5
JP1-15	MODULE ALARM CONTROL	+12VDC OUTPUT (1.5 AMPS MAX)

- CHANGE CURRENT JPI-13 and JPI-15 TO 1.5A MAX - 5/31/12
- Change JP1-4 Timer to 5 min, 11/19/13
- UPDATE CLIP, FACEPLATE HINGE, PANEL THICKNESS REQUIREMENTS, CHANGE TIMER BACK TO 10 MIN - 9/29/14
- ADD POWER REQUIREMENTS, UPDATE DWG REF NOTES - 4/17/15
- ADD #5 BALLOON TO DENOTE THE NEW MOUNTING SPRING CLIP - 6/4/15
- CHANGE HEADER TO 94-VO PART, ADD MATE-N-LOK II MATING PART #S 5/11/16

**DORAN MANUFACTURING CO.**  
CINCINNATI, OHIO 45225

PART NAME			
Sleeping Child Check SCC-OEM-U2			
TOLERANCES		DECIMALS .XXX ± .015, .XX ± .031 FRACTIONS ± .093, ANGLES ± OR- 1°	
CUSTOMER		SCALE 1" = 1.5"	
DRAWN JPR	DATE 5/25/12	DRAWING NO.	REV.
APPR	DATE	<b>8047-A</b>	<b>6</b>