

Removal Instructions for Doran Remote Displays

Starting in 2015 Doran Remote Displays are assembled with a new design clip to improve retention in the panel. Installation of the displays into the panel is not changed, but removal requires a different procedure.

This clip design and removal procedure applies to the OEM Sleeping Child Check Monitors and to the Exterior Light Monitors with remote display.

THE REMOVAL PROCEDURE

At the corners of the lower edge of the bezel there are two thin slots. Using a thin object as a tool (like paper clip, small screw driver, etc.), see Figures A and B, slide the tool into the slot.

Apply a light force parallel to the panel and toward the opposite edge of the bezel. Then simultaneously pull the edge of the bezel away from the panel as shown in Figures B and C. It may require going from side to side to free both corners or use two (2) tools.

Continue to pivot the display until the body of the display clears the panel, then drop top hinge edge below the panel and remove.



Figure A

April 9, 2015, gk



Figure B

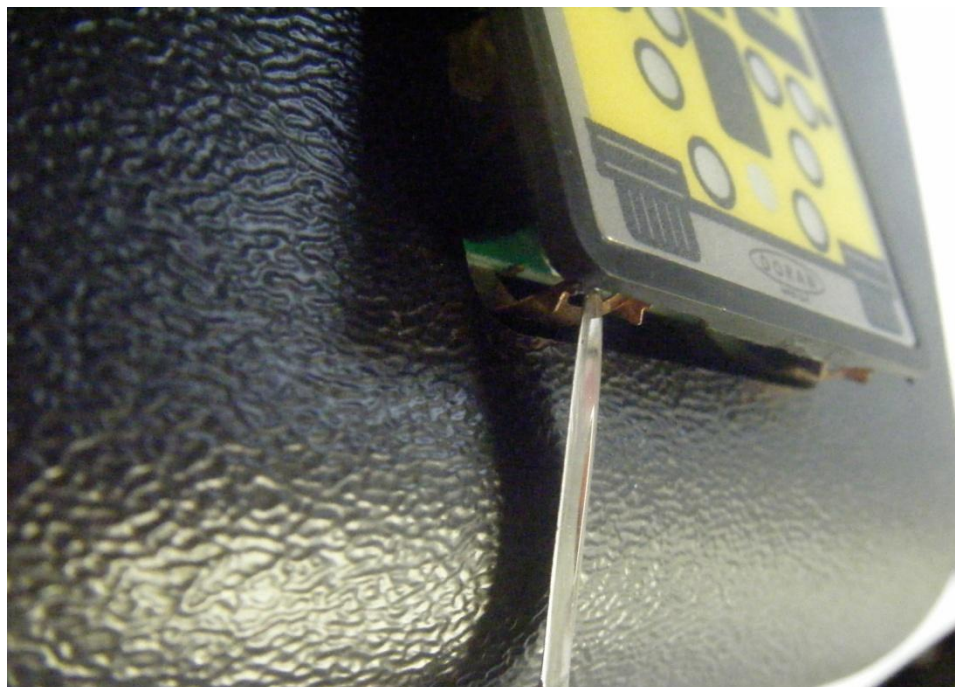


Figure C